

Mary Hensold Learning Centre

Bringing Hope, Education & the
Love of Christ to Every Child



+25410 325 5317
maryhensold.lc@gmail.com



Welcome to Mary Hensold Learning Centre

Mary Hensold Learning Centre is a Christian mission school dedicated to transforming lives through faith-based education. We exist to serve children in underserved communities—equipping them academically, spiritually, and emotionally to break free from the cycle of poverty and live out their God-given potential.

We believe education is most powerful when rooted in love and truth. Through a Christ-centered approach, we integrate strong academics with daily devotion, prayer, and values-based discipleship—preparing our students to thrive in school, in life, and in their relationship with God.



Vision, Mission, Program Goals & Target Population



Our Vision

To see every child—regardless of background—educated, empowered, and equipped to reach their full God-given potential, becoming agents of hope, excellence, and transformation in their families and communities.

Our Mission

Our mission is to provide quality, Christ-centered education to children from underserved communities, nurturing their minds, shaping their character, and strengthening their faith.

Through academic excellence, spiritual discipleship, and compassionate care, we raise a generation of leaders grounded in truth, purpose, and love.

Program Goals & Objectives

Our core goal is to deliver affordable, Bible-based education in a safe and supportive environment.

We aim to:

01 Create peaceful, child-friendly classrooms

02 Provide space for children with special needs to flourish

03 Offer skill-based and life-readiness training

04 Encourage the discovery and growth of talents

05 Instill Christian values and integrity

06 Prepare students for higher education and future careers

07 Share the love of Jesus with students and their families



Target Population

The program serves children aged 3–13 years, focusing on those who are:



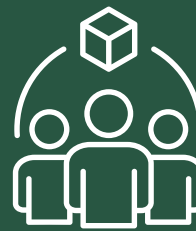
Orphans or without parental care



From single-parent homes



Living with disabilities



In under-resourced communities



Initial focus area: Kasarani and Roysambu, with plans to expand as resources allow.



We believe that every child is **capable, competent, and ready to learn in their own unique way.** Our goal is to guide them in building **confidence, curiosity, and compassion** as they take their first steps in their educational journey.



Program Components

We believe that true education nurtures both the mind and the soul. Our academic and spiritual programs are designed to grow confident, thoughtful learners who walk in both wisdom and faith. By balancing strong academics with intentional discipleship, we prepare students not just for exams—but for life.

A. Core Educational Activities

Math, Language, Science, & Social Studies instruction

Reading and literacy programs

Tutoring and remedial support

Basic computer/ digital literacy

Christian education and Bible study

B. Spiritual Development

Daily devotions and prayer

Scripture memory and Bible storytelling

Discipleship groups

Student-led outreach projects

Weekly chapel services

Through our health and nutrition support, and by walking alongside families and communities, we create a nurturing environment where every child feels safe, supported, and empowered to thrive both in and beyond the classroom.

C. Health & Nutrition

01 Daily meals /
feeding program

02 Health screenings and
hygiene education

03 First aid and basic
medical care

04 Counseling and
emotional support

D. Family & Community Engagement



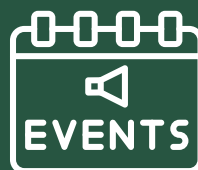
Parent-teacher
workshops



Home visits



Adult literacy and
vocational training



Community events
(fairs, clean-ups,
sports days)

Behind every thriving student is a well-equipped teacher and a supportive learning environment. We invest intentionally in our staff—through training, mentorship, and spiritual care—because we believe their growth directly impacts the children they serve. By also building safe, functional spaces and providing the tools they need, we lay the foundation for lasting transformation in every classroom.

E. Staff Development & Capacity Building

- 01** Teacher training and spiritual retreat
- 02** Peer mentoring and team-building
- 03** Performance reviews and coaching
- 04** Knowledge sharing and professional growth

F. Infrastructure & Support

Safe classrooms and library

Sanitation, water, and security

School supplies and learning tools

**Transportation or school shuttle
(if applicable)**





Program Operations & Sustainability

Every child is uniquely gifted by God, and we are committed to helping them discover and develop those gifts. Whether through personalized support for learners with special needs or creative outlets like music, dance, and scouts, we provide space for every child to be seen, celebrated, and nurtured holistically.

Special Needs Department



01 Learning disability diagnostics



02 Classroom integration with one-on-one support



03 Talent and passion development tailored to each child

Extracurricular Activities

We nurture the whole child through a variety of creative and physical outlets, including:

- Dance and gymnastics
- Sign language
- Voice and instrumental music lessons
- Scouts and leadership development

To create lasting impact, a strong mission needs a strong foundation. From how we grow and staff our school, to how we measure progress and care for every child, we are intentional about building a model that is thoughtful, accountable, and rooted in long-term vision.

Implementation Strategy

01 Partnerships Include:

- Ministry of Education
- Local NGOs and community groups
- School board and Christian advisors
- International mission partners and donors

02 Key Staff Roles:

- Principal
- Teachers
- School Nurse
- Social Worker
- Accountant
- Cook & Cleaning Support

Monitoring & Evaluation

To ensure accountability and ongoing excellence, we track key metrics including:

- Student-teacher ratios
- Attendance and graduation rates
- Reports on child welfare
- Teacher development progress

Data is gathered via termly surveys, case reports, and parent/community feedback.





Funding, Risk & Long-Term Sustainability

Budget Overview

The program budget covers:			Funding Sources
Educational materials & curriculum	Child protection & school infrastructure	Student sponsorship and support	Affordable school fees
Extracurriculars and activities	Healthcare & nutrition	Monitoring and evaluation	Local and international sponsorships
Staff salaries and benefits			Income-generating projects

Risk & Mitigation Plan

We recognize potential risks such as staff burnout, limited training opportunities, and security threats.

Our mitigation strategies include:

- 1.Retention incentives and recognition
- 2.Ongoing training and wellness support
- 3.Security infrastructure and community watch
- 4.Reduced admin burdens for teachers
- 5.NGO partnerships for free resources

Sustainability Plan



STEP 1

Integrating faith into daily instruction



STEP 2

Hosting prayer and outreach events



STEP 3

Developing long-term facility improvement plans



STEP 4

Encouraging community and parent involvement



STEP 5

Engaging mission volunteers and interns

Mary Hensold Learning Centre

Mary Hensold Learning Centre is more than a school—it is a place of transformation, where every child is seen, valued, and empowered to shine. Rooted in Christ, guided by purpose, and committed to excellence, we strive to leave no child behind.

Contact Support
+25410 325 5317
www.mhlc.odoo.com
maryhensold.lc@gmail.com